



**CONSTRUCTION REQUIREMENTS**

1. MAINTAIN MINIMUM COVER OF 36" BELOW FLOW LINE.
2. VERIFY EXISTING SUBSTRUCTURES PRIOR TO EXCAVATION.
3. ALL 4" TO CONFORM TO PTS-77 OR EQUIVALENT.
4. ALL 2" TO CONFORM TO PTS-66 OR EQUIVALENT.
5. ALL BACKFILL TO BE SAND 12" BELOW AND 6" ABOVE.
6. DO NOT BACKFILL OVER ANY TELEPHONE BURIED SPLICE LOCATIONS UNTIL AUTHORIZED BY TELEPHONE COMPANY INSPECTOR.
7. PLACE # 6 TINNED GROUND WIRE AT BONDING POINTS. (SEE BONDING DETAIL)
8. PLACE PULL ROPE IN NEW CONDUIT.
9. DO NOT CUT CURB & GUTTER.
10. ALL SURFACES AND LANDSCAPES WHICH HAVE BEEN REMOVED OR DAMAGED IN THE COURSE OF CONSTRUCTION SHALL BE RECONSTRUCTED OR REPLACED TO AT LEAST EQUAL OR BETTER THAN THE PREVIOUS OR ADJACENT SURFACE.
11. ALL TRAFFIC CONTROL TO BE IN ACCORDANCE WITH THE CALIFORNIA MANUAL ON UNIFORM TRAFFIC CONTROL DEVICES (MUTCD) LATEST EDITION.
12. PER GUIDELINES, ALL HANDHOLES, SPLICE BOXES, AND MANHOLES TO BE PURCHASED FROM EITHER NEWBASE OR UTILITY VAULT.

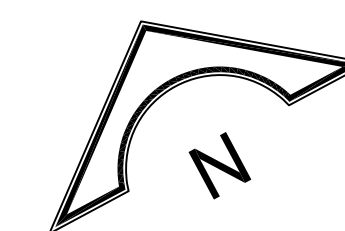
THIS PROJECT REQUIRES EXCAVATION. CONSTRUCTION WILL UTILIZE AND IMPLEMENT ALL BEST MANAGEMENT PRACTICES (BMP'S) AS REQUIRED TO ENSURE COMPLIANCE WITH POLICY LETTER ISSUE FEBRUARY 21, 2003 AND REVISED IN OCTOBER 2005 BY ENVIRONMENTAL MANAGEMENT CONCERNING STORM WATER PERMITTING AND STORM WATER POLLUTION PREVENTION PLANS (SWPPP'S) AND IN ACCORDANCE WITH THE CLEAN WATER ACT (1972) AND EPA REGULATIONS PUBLISHED IN 1990 AS MODIFIED BY THE PHASE II RULE IN 1999.

LOCATION:

DESCRIPTION:

STREET TYPE	SOIL CLASS	PROPOSED BACKFILL
MAJOR	N/A	N/A
SECONDARY	N/A	N/A
LOCAL	N/A	N/A
ALLEY	N/A	N/A

CONDUIT RECORD:	
SUB MAP #:	
STREET NAME:	N/A
MATERIAL:	N/A
LINEAR FEET:	N/A

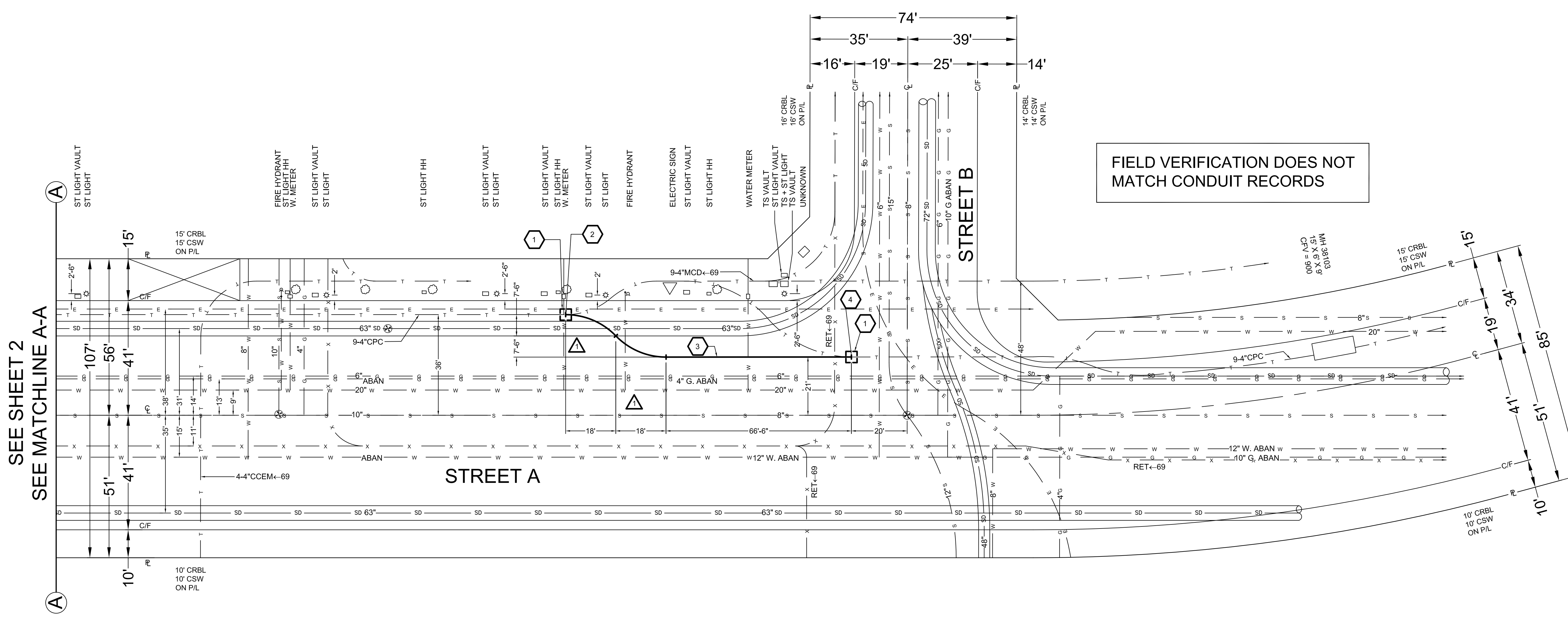


EXCAVATION DATA	
CITY OF:	
PLACING:	
EXCAVATION IN CONCRETE SIDEWALK	
EXCAVATION IN ASPHALT STREET	
EXCAVATION IN ASPHALY STREET	
EXCAVATION IN DIRT	

TOTAL EXCAVATION:	
NUMBER OF CUTS:	
CUT DATA IN CONCRETE	
CUT DATA IN ASPHALT STREET	

DATE	REVISIONS	LAYOUT ENGINEER
		TELEPHONE NUMBER
		EMAIL ADDRESS
		FACILITY ENGINEER
		TELEPHONE NUMBER
		GEOLOG
		CENTRAL OFFICE
		UNDERGROUND CONSTRUCTION PROJECT NUMBER
SCALE:	THOMAS GUIDE	
FILENAME:	Trench Work Sample B.dwg	DRAWING:

FIELD VERIFICATION DOES NOT MATCH CONDUIT RECORDS



SEE SHEET 2  
SEE MATCHLINE A-A

CONDUIT CURVE DATA		
ANGLE	RADIUS	LENGTH
45° 57' 54"	25'	20'-1"

FJS CABLE ENGINEERING, INC.  
www.vector1.com  
14340 Bolsa Chica Rd., Suite X  
Westminster, CA 92683  
TEL (714) 697-3763  
FAX (714) 697-9593



**CONSTRUCTION REQUIREMENTS**

1. MAINTAIN MINIMUM COVER OF 36" BELOW FLOW LINE.
2. VERIFY EXISTING SUBSTRUCTURES PRIOR TO EXCAVATION.
3. ALL 4" TO CONFORM TO PTS-77 OR EQUIVALENT.
4. ALL 2" TO CONFORM TO PTS-66 OR EQUIVALENT.
5. ALL BACKFILL TO BE SAND 12" BELOW AND 6" ABOVE.
6. DO NOT BACKFILL OVER ANY TELEPHONE BURIED SPLICE LOCATIONS UNTIL AUTHORIZED BY TELEPHONE COMPANY INSPECTOR.
7. PLACE # 6 TINNED GROUND WIRE AT BONDING POINTS. (SEE BONDING DETAIL)
8. PLACE PULL ROPE IN NEW CONDUIT.
9. DO NOT CUT CURB & GUTTER.
10. ALL SURFACES AND LANDSCAPES WHICH HAVE BEEN REMOVED OR DAMAGED IN THE COURSE OF CONSTRUCTION SHALL BE RECONSTRUCTED OR REPLACED TO AT LEAST EQUAL OR BETTER THAN THE PREVIOUS OR ADJACENT SURFACE.
11. ALL TRAFFIC CONTROL TO BE IN ACCORDANCE WITH THE CALIFORNIA MANUAL ON UNIFORM TRAFFIC CONTROL DEVICES (MUTCD) LATEST EDITION.
12. PER GUIDELINES, ALL HANDHOLES, SPLICE BOXES, AND MANHOLES TO BE PURCHASED FROM EITHER NEWBASE OR UTILITY VAULT.

THIS PROJECT REQUIRES EXCAVATION. CONSTRUCTION WILL UTILIZE AND IMPLEMENT ALL BEST MANAGEMENT PRACTICES (BMP'S) AS REQUIRED TO ENSURE COMPLIANCE WITH POLICY LETTER ISSUE FEBRUARY 21, 2003 AND REVISED IN OCTOBER 2005 BY ENVIRONMENTAL MANAGEMENT CONCERNING STORM WATER PERMITTING AND STORM WATER POLLUTION PREVENTION PLANS (SWPPP'S) AND IN ACCORDANCE WITH THE CLEAN WATER ACT (1972) AND EPA REGULATIONS PUBLISHED IN 1990 AS MODIFIED BY THE PHASE II RULE IN 1999.

LOCATION:

DESCRIPTION:

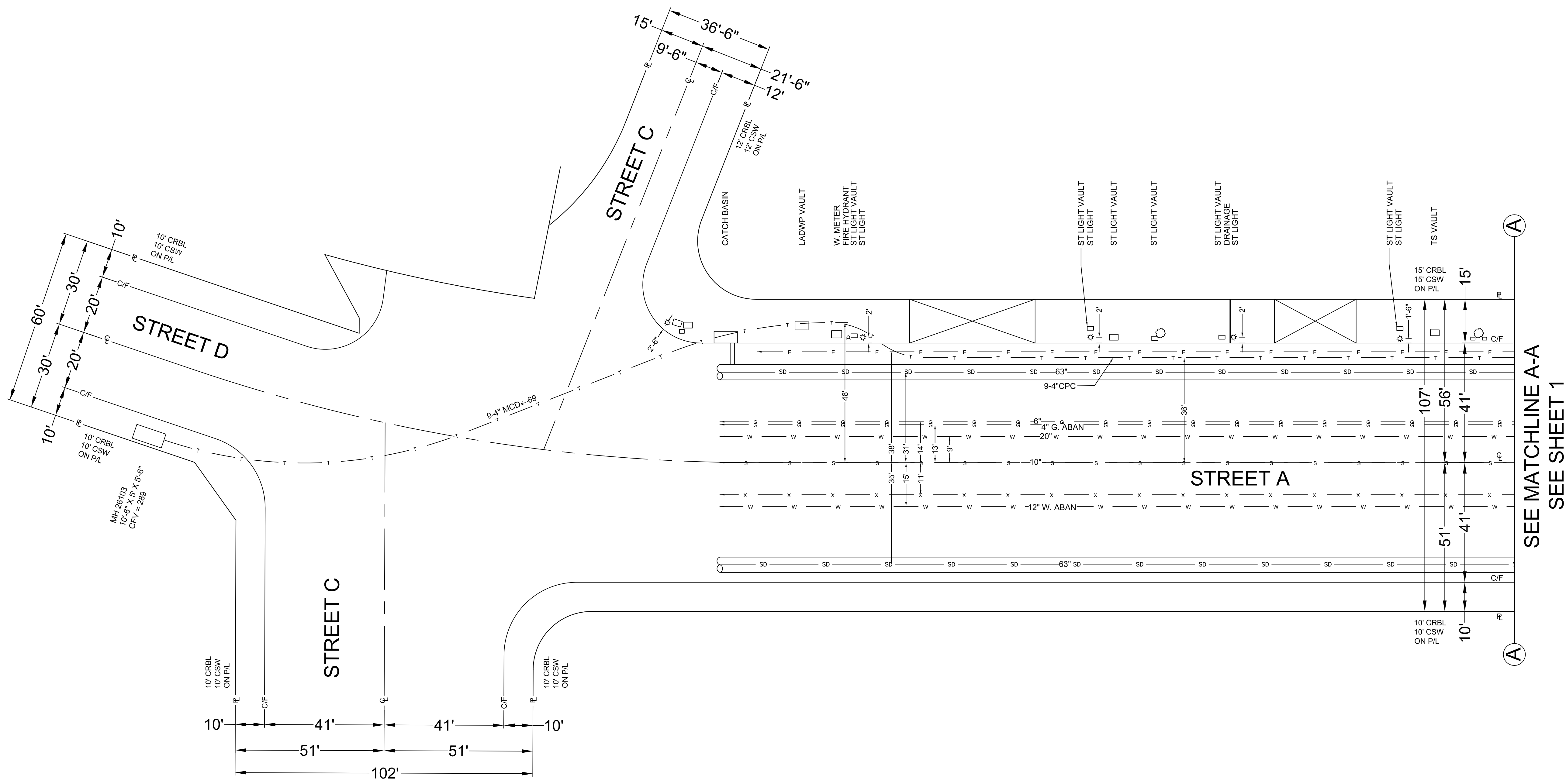
STREET TYPE	SOIL CLASS	PROPOSED BACKFILL
MAJOR	N/A	N/A
SECONDARY	N/A	N/A
LOCAL	N/A	N/A
ALLEY	N/A	N/A

CONDUIT RECORD:		
SUB MAP #:		
STREET NAME:	N/A	
MATERIAL:	N/A	
LINEAR FEET:	N/A	

EXCAVATION DATA	
CITY OF:	
PLACING:	
EXCAVATION IN CONCRETE SIDEWALK	
EXCAVATION IN ASPHALT STREET	
EXCAVATION IN ASPHALY STREET	
EXCAVATION IN DIRT	

TOTAL EXCAVATION:	
NUMBER OF CUTS:	
CUT DATA IN CONCRETE	
CUT DATA IN ASPHALT STREET	

DATE	REVISIONS	LAYOUT ENGINEER
		TELEPHONE NUMBER
		EMAIL ADDRESS
		FACILITY ENGINEER
		TELEPHONE NUMBER
		GEOCO
		CENTRAL OFFICE
		UNDERGROUND CONSTRUCTION PROJECT NUMBER
SCALE:	THOMAS GUIDE	
FILENAME:	Trench Work Sample B.dwg	DRAWING:



FJS CABLE ENGINEERING, INC.  
www.vector1.com  
14340 Bolsa Chica Rd., Suite X  
Westminster, CA 92683  
TEL (714) 897-9793  
FAX (714) 897-9983

SEE MATCHLINE A-A  
SEE SHEET 1